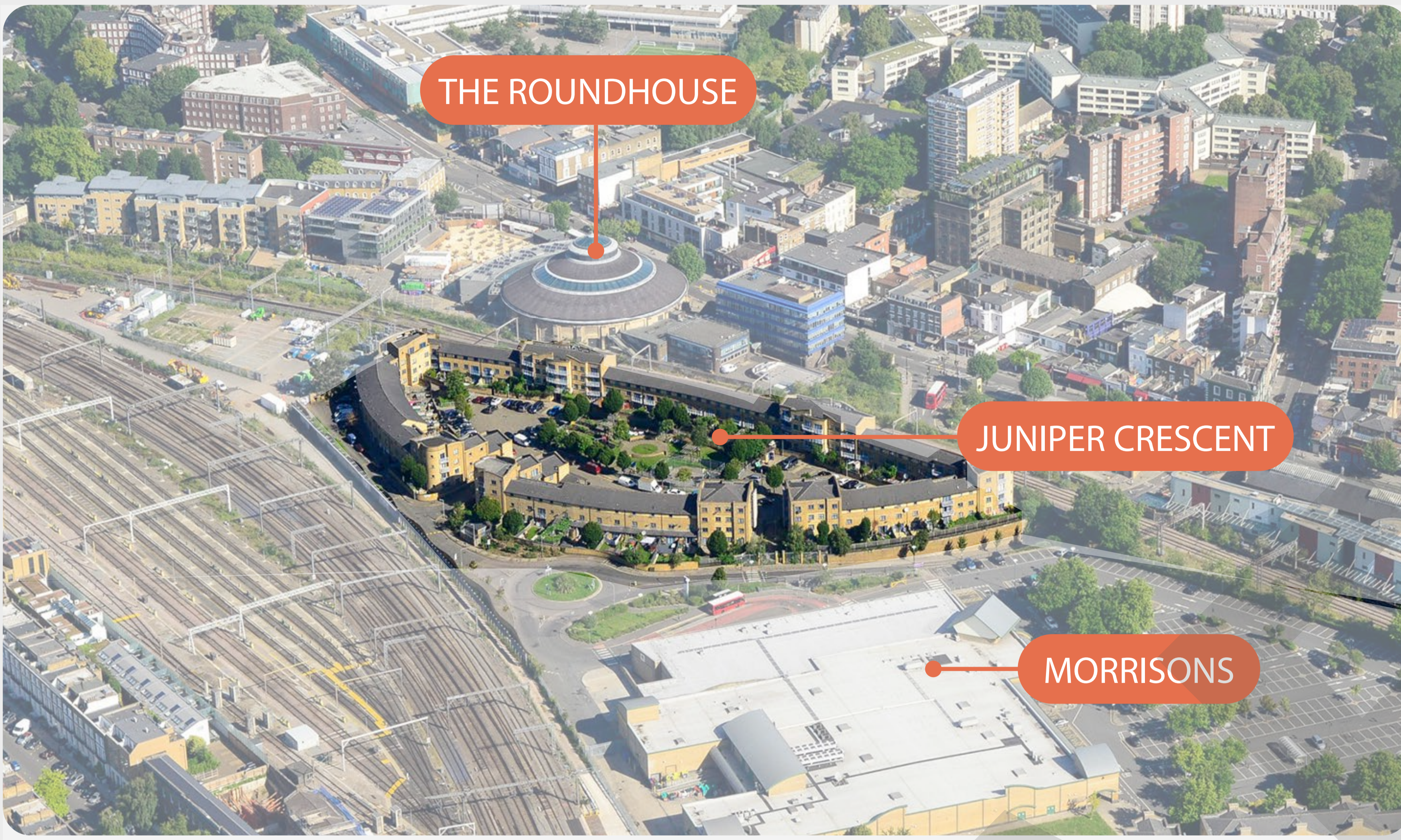




HELLO AND WELCOME!

Welcome to today's workshop event!
We hope you are well!



We are here today to build on the vision for the future Juniper Crescent with you.

Following the last event in June 2023, where we introduced the planning process and timeline, we would like to invite you to take part in workshop activities to actively contribute to and influence the design proposal for Juniper Crescent. Today we will explore themes around open space, buildings and community uses.

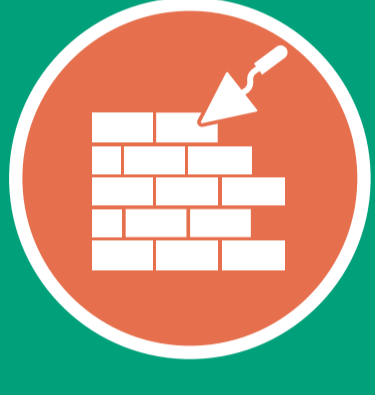
WHAT WILL BE DISCUSSED AT TODAY'S EVENT?



Your key priorities and feedback from previous events



Open spaces and public areas



Building appearance and materiality



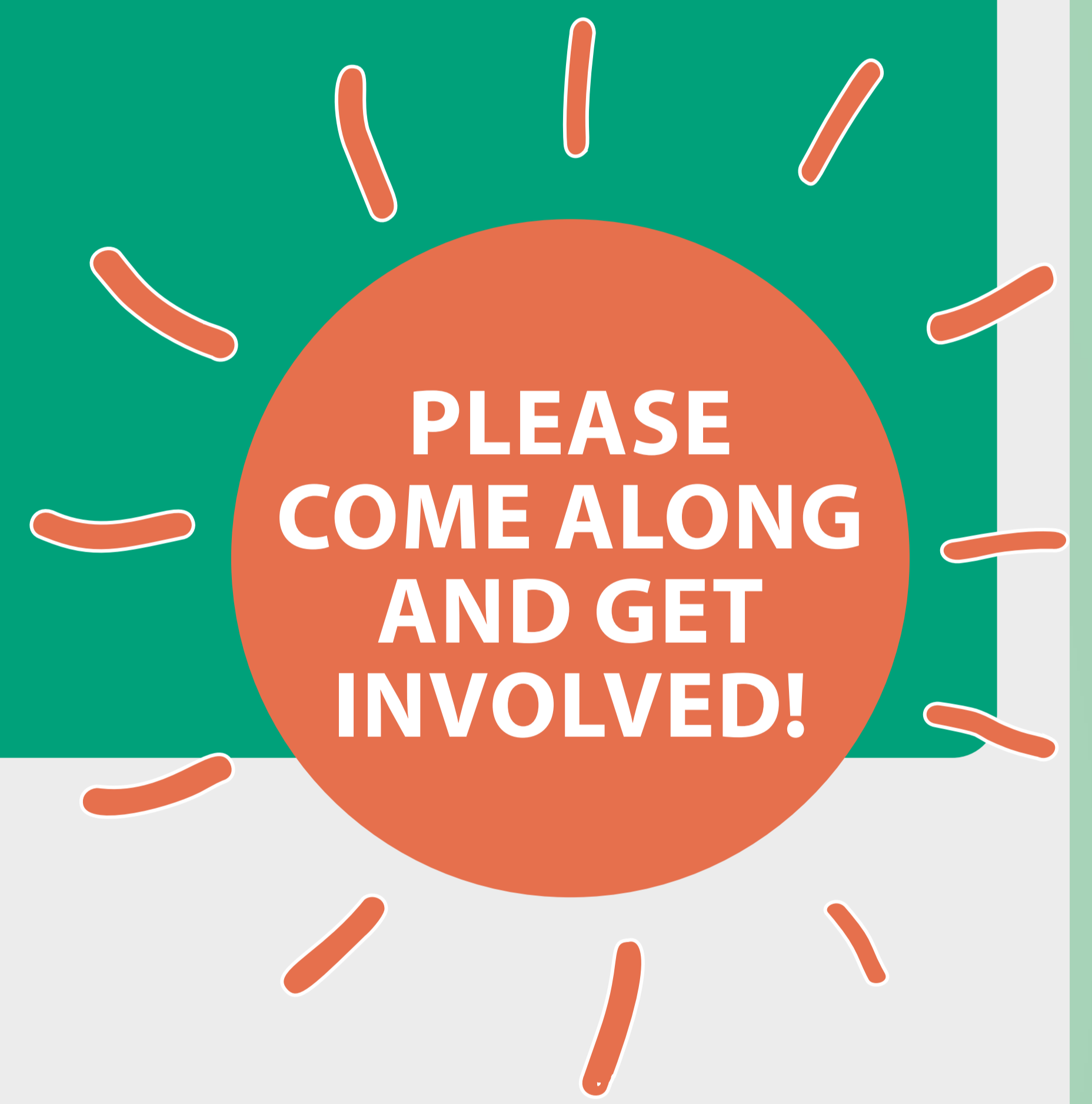
Community uses



How to get involved and future events



Next steps



MEET THE TEAM...

ONE HOUSING (part of Riverside) Registered Housing Provider

A housing association and not-for-profit organisation with a strong social purpose. One Housing is a part of Riverside Group Limited and offers a wide range of housing options including homes for social rent in partnership with local authorities.

COUNTRYSIDE Development Partner

UK's leading mixed-tenure developer, bringing together modern and efficient delivery methods to create sustainable communities where people love to live.

PRP Architecture, Masterplanning & Landscape Architecture

Design led team with over 50 years experience in community led housing regeneration developments in the UK and across London.

CONNECT Public and Stakeholder Engagement

Community and stakeholder consultation experts to deliver our wider public and stakeholder engagement.

COMMUNITIES FIRST Independent Tenant Advisor (ITA)

Selected by tenants representatives at the start of the redevelopment process to help improve discussions between residents and One Housing, and provide confidential advice and support tenants.



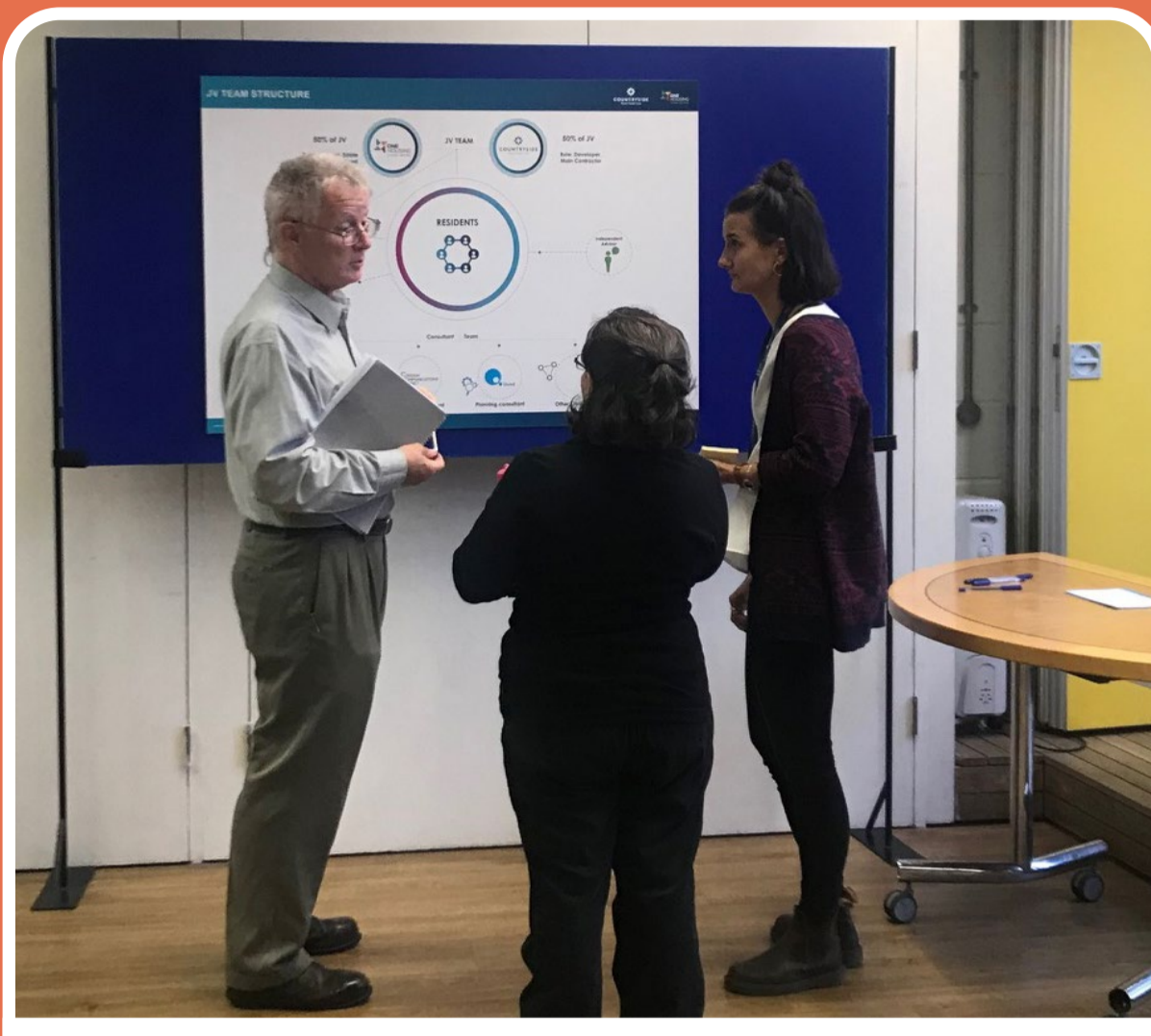
JUNIPER CRESCENT



YOUR VIEWS

THE COLLABORATIVE PROCESS

Since 2017, One Housing has been engaging with residents on the regeneration proposals for Juniper Crescent and listening to their feedback. You have worked with us to shape the layouts of new homes, ensuring that we got the details right. You told us the importance of keeping a sense of community in the neighbourhood by creating communal spaces that offer something for everybody. We would like to continue this dialogue with you and invite you to keep getting involved and providing your feedback.



Exhibition Events



New Homes Design Month



Community Gardening



Residents Workshops



1-2-1 Meetings



Site Visits



Community Fun Day



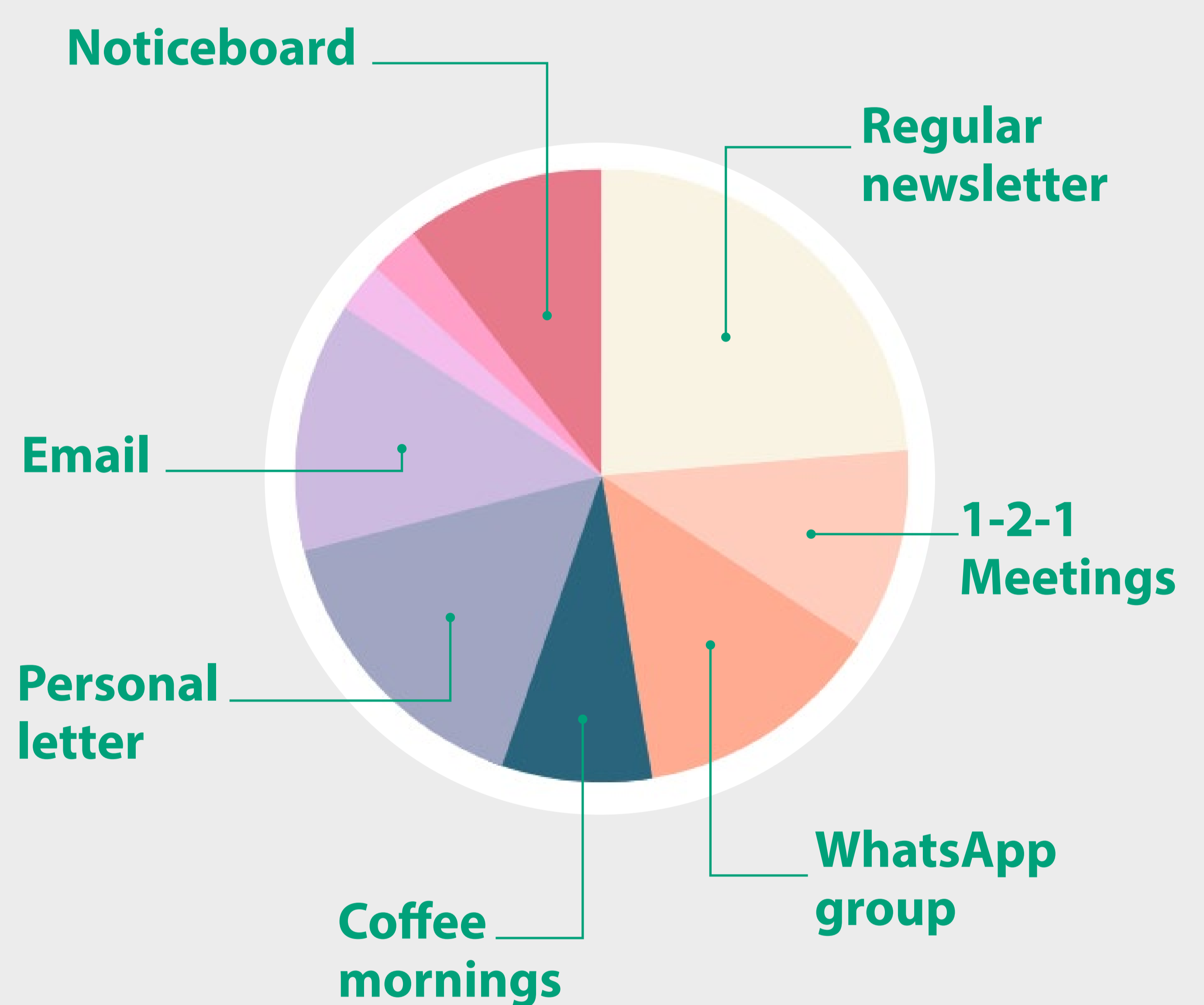
June Intro Event

FEEDBACK FROM THE JUNE INTRO EVENT

YOU SAID...

Rehousing process & moving out	Tenancy rights
Open spaces	Safety and security
Home layouts	Architecture
Community uses	Materials

HOW WOULD YOU LIKE TO BE KEPT INFORMED?



We would like to continue this dialogue with you and invite you to keep getting involved and providing your feedback.

PLEASE JOIN US AND GET INVOLVED!



JUNIPER CRESCENT



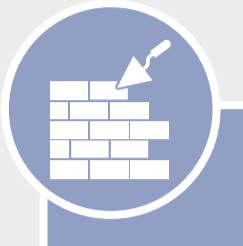
TODAY'S ACTIVITIES

Today we have prepared 3 workshop tables, each with a different activity which should take around 5-10 minutes to complete. The aim is to rotate around the tables to take part in all activities.

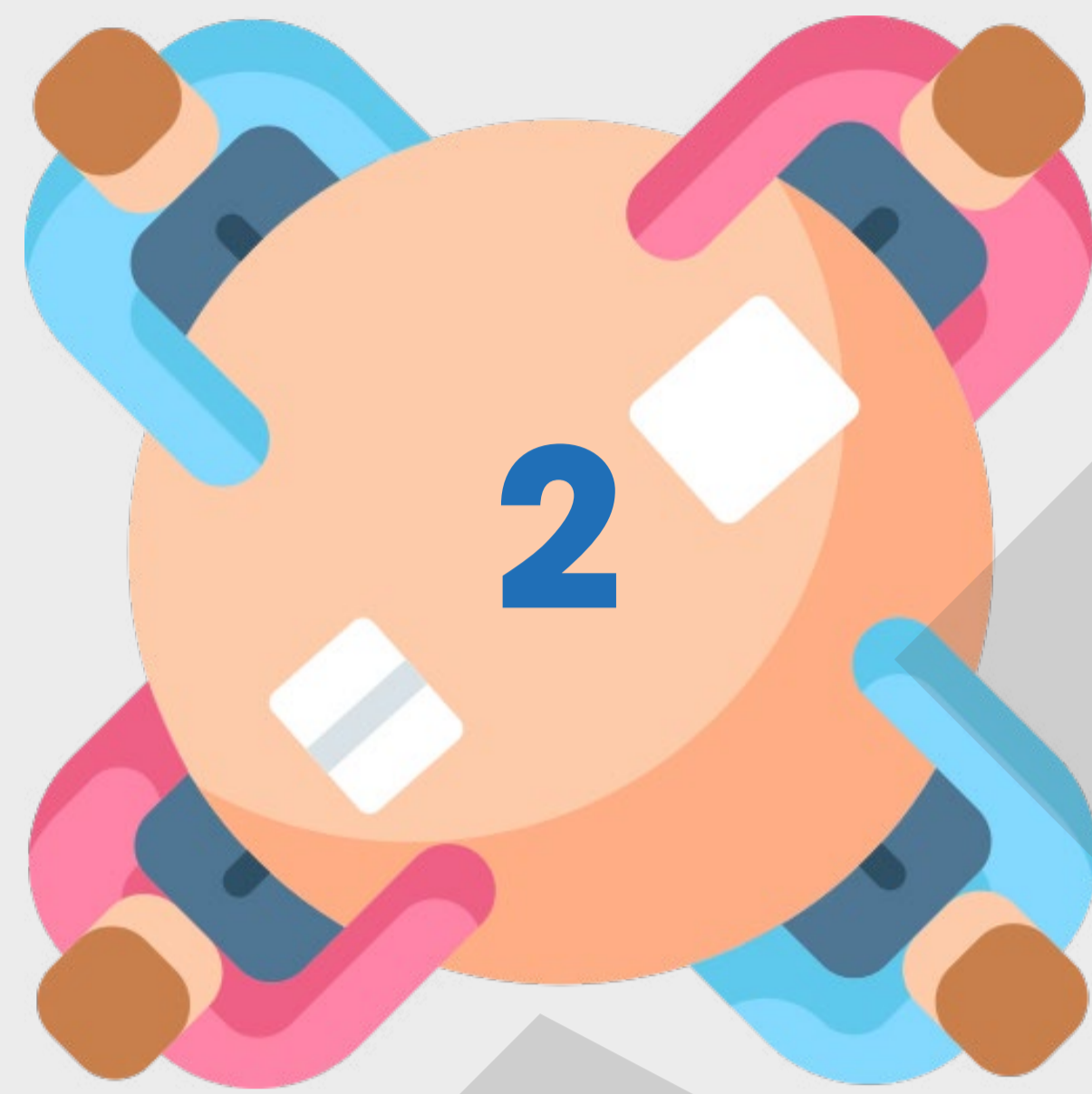
KEY THEMES



OPEN SPACES & PUBLIC REALM



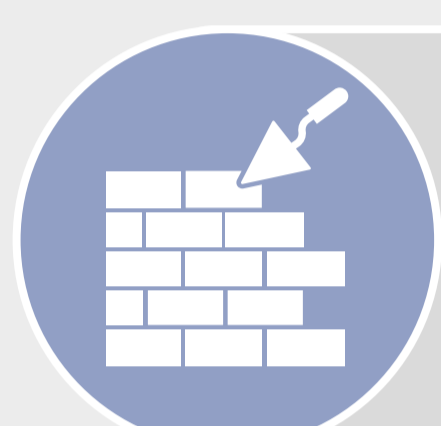
BUILDINGS & MATERIALS



COMMUNITY USES



Come explore with us the proposed open spaces and public areas



How would you like your buildings to look?



Which types of community uses would you and your household enjoy using?

TABLE 1 INSTRUCTIONS

1

On your indicative A3 plan of the ballot plan, animate the open space and public areas with the precedent image and name stickers that best represent how you would like each open space to look and feel. Place the stickers on the blank annotation boxes around your plan.

TABLE 2 INSTRUCTIONS

1

Stick your preferred precedent images and word stickers onto the buildings mood board. Stickers with name suggestions will also be available so that you are given the opportunity to name your building.

2

Which materials and architectural features do you like or dislike?
Stick red stickers to indicate if you dislike, and green stickers if you like it.

TABLE 3 INSTRUCTIONS

1

Fill in your profile card with brief information about you and your household, so that we can better understand your lifestyle and personal needs.

2

The A1 display board presents precedent images of a range of community uses. On the other side of your profile card, please fill in the 'My Activities' section by ticking or adding activities which you would be interested in using and would want to be incorporated into the future plans for Juniper Crescent.



PRP

One Housing



Countryside Partnerships

JUNIPER CRESCENT



FUTURE EVENTS AND PROGRAMME

JOIN US TO COLLABORATIVELY DESIGN THE FUTURE OF JUNIPER CRESCENT

A big thank you to everyone who joined us at our Intro Event in June, we gained valuable feedback from yourselves and we hope that you found these events useful and informative.

As we work our way towards planning submission for Juniper Crescent in March 2024, we would like to invite you to a series of engagement events to collaboratively design the proposals for Juniper Crescent.

We would like to invite you to a wide variety of events so that you can get involved throughout the planning application process. These will take place in the form of drop-in exhibition events and workshop activities. Below, an indicative programme timeline provides a summary of the key next engagement events.



PROGRAMME

JUNE 2023

INTRO EVENT

What happened since the Ballot and our next steps towards the **Full Planning Application**.

JULY 2023

EVENT 1: Workshops

Come and build the masterplan strategies in collaboration with the design team!
Workshop themes will cover open spaces, community uses and architecture.

WHERE WE ARE TODAY

SEPTEMBER 2023

EVENT 2: Design updates & feedback

Come along and drop-in the exhibition events!
You will see feedback from earlier workshop events and updated masterplan design and strategies.

OCTOBER 2023

EVENT 3: Workshops

Participate in hands-on workshop activities to design the final masterplan!
Workshop topics will cover architectural and landscape details of the proposal.

DECEMBER 2023

EVENT 4: Design updates & feedback

Come along and drop-in the exhibition events!
You will see feedback received from the design workshop events and updates on the masterplan design proposal.

JANUARY 2024

EVENT 5: Design updates exhibition

Come see the final design proposals reflecting all design updates tested and key discussions held at earlier events.

MARCH 2024

FINAL EXHIBITION EVENT

Come along and take a look at the final design proposal and all supporting documents for the Full Planning Application.

PLEASE COME AND JOIN US!



JUNIPER CRESCENT

»» NEXT STEPS

WHAT HAPPENS NEXT?

Following this workshop event, we will begin the Concept Design Stage. After exploring key design themes with you today we will analyse the feedback to inform the design updates and will be communicating with you regarding future engagement events and updates on the plans for Juniper Crescent.

We invite you to take an active role in designing the future of Juniper Crescent with our design team.



KEEP INFORMED AND GET INVOLVED!

HOW WOULD YOU LIKE TO BE KEPT INFORMED AND INVOLVED IN THE FUTURE?

Drop-in exhibition events

Email

Workshop activities

Website

Newsletters



PLEASE USE THE STICKY NOTES PROVIDED TO LET US KNOW HOW YOU WOULD LIKE TO BE INFORMED:

Noticeboard posters

Coffee mornings

1-2-1 meetings

WhatsApp group

.....

.....

.....

WOULD YOU LIKE TO JOIN THE ESTATE BOARD?

As part of the regeneration, we are looking to set up a Juniper Crescent Estate Board for the new development. This Estate Board will consist of residents, members of One Housing (from departments such as: regeneration, property services, housing management and services charges) and local councillors.

AN OPPORTUNITY TO BE INVOLVED IN THE ONGOING MANAGEMENT OF THE ESTATE

BE PART OF A FORUM AND HELP US DEVELOP THE ENGAGEMENT PROGRAMME

ESTABLISH LOCAL PRIORITIES AND DEVELOP IDEAS

PLAY A KEY ROLE IN MONITORING OUR COMMITMENTS

SPEAK TO THE TEAM

Bella Chapman
Development Manager
Countryside

Peter Blake
Head of Regeneration
One Housing

Raj Mandair
Regeneration Manager
One Housing

Mahbub Khandaker
Development Director
Countryside

Marina Cox
Regeneration Officer
One Housing

Benedetta Ficarelli
Urban Designer
PRP Architects

Steve Gair
Project Manager
One Housing

Roumpini Perakaki
Associate
PRP Architects

Alexandra Andone
Associate Director
PRP Architects

Ian Simpson
Resident Adviser
Communities First

If you would like a 1-1 confidential advice, please speak to Ian Simpson and the Communities First team.

Many members of the team are on hand today and are available to answer any questions that you may have.



Thank you to all the residents that have already shown interest to join the Estate Board!

The Board plan to meet once every fortnight, with flexibility to increase or decrease frequency when needed.



JUNIPER CRESCENT